

Oakland Terrace, Ferndale, , CF43 4UD
£115,000



- South-West Facing
- New Electrics & Central Heating
- Ideal First Time Buy
- Upstairs Shower Room
- No Onward Chain
- Close To Local Amenities
- New Combi Boiler
- Ideal First Time Buy
- EPC Rating D

Description...

James Douglas are delighted to welcome this fabulous three bedroom mid-terrace property to the market. Set in the popular area of Ferndale. The perfect first-time-buy, investment or for someone looking to downsize. In brief terms the accommodation comprises an entrance hallway, living room, dining room and brand new kitchen all on the ground floor. Upstairs there are two double bedrooms, a good sized single bedroom and a brand new modern shower room. Mains gas fired central heating (Glow-worm combi boiler) and UPVC double glazed windows and doors throughout. On-street parking to the front. South-west facing, two tier rear garden space complemented by a handy storage shed and a concrete base on the lower level. Steps lead up to the upper level which is complemented by real grass, trees and shrubbery. Spectacular views to the front. EPC D potential B. Council tax band A.

- **BEING SOLD WITH NO ONWARD CHAIN**
- **MODERNIZED AND REFURBISHED THROUGHOUT**
- **SOUTH-WEST FACING TWO TIER REAR GARDEN SPACE**
- **BRAND NEW KITCHEN, BATHROOM, ELECTRICS AND CENTRAL HEATING**

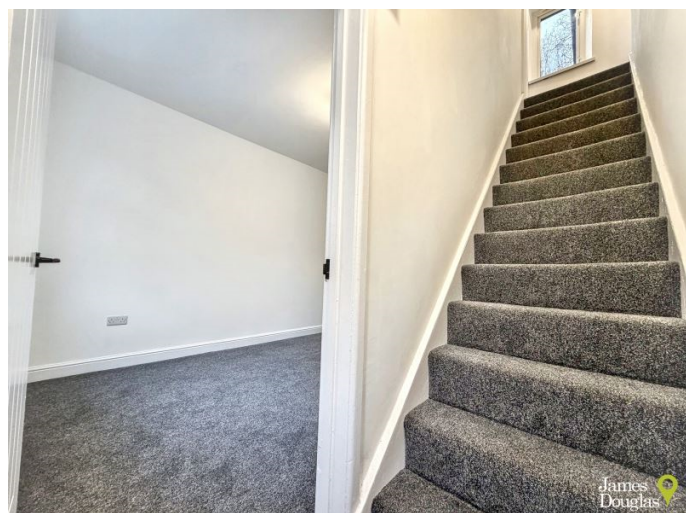
Oakland Terrace, Ferndale is within walking distance of Ferndale town centre and a few minutes drive from Tylorstown town centre which includes a wide range of shops and sporting and recreational facilities. The local primary schools are Y.G.G. Llyn-y-Forwyn Primary School & Darran Park Primary School with the local high school being Ferndale Community School. There are useful mainline railway stations in Llwynypia town centre & Ystrad town centre. Easy access to the M4 motorway brings other major centres including the capital city of Cardiff, Newport and Swansea within commuting distance.

Additional Information

Tenure: Freehold
EPC: D
Council Tax Band: A

Accommodation...

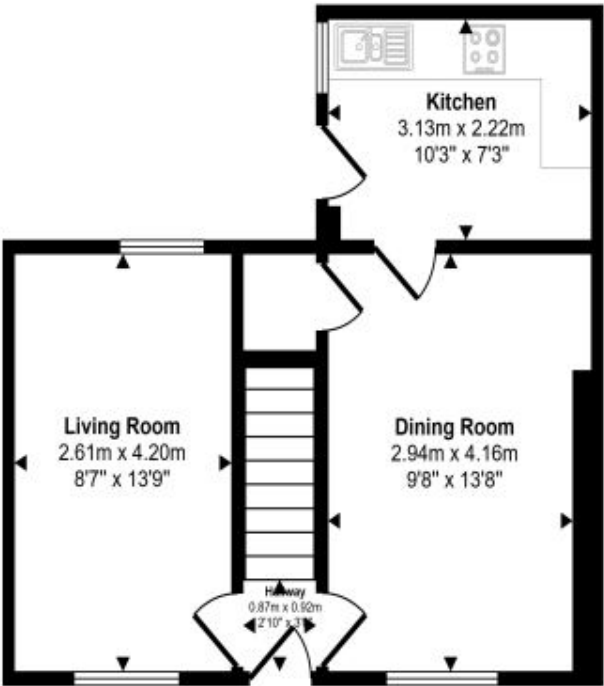
- Entrance Hallway
- Living Room
- Dining Room
- Kitchen
- Landing
- Bedroom One
- Bedroom Two
- Bedroom Three
- Shower Room
- Outside
- Directions



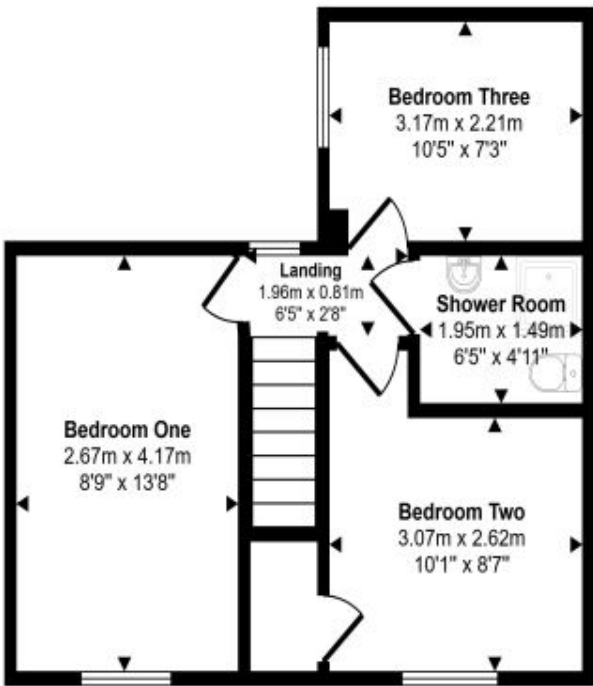


Floorplan

Approx Gross Internal Area
73 sq m / 784 sq ft



Ground Floor
Approx 36 sq m / 392 sq ft



First Floor
Approx 36 sq m / 392 sq ft

This floorplan is only for illustrative purposes and is not to scale. Measurements of rooms, doors, windows, and any items are approximate and no responsibility is taken for any error, omission or mis-statement. Icons of items such as bathroom suites are representations only and may not look like the real items. Made with Made Snappy 360.

Energy Rating

