

Atlantic trading estate, Barry, , CF63 3RF
£800,000



- EPC Rating TBC

Description...

James Douglas estate agents are very pleased to offer new to the market this substantial workshop located in Atlantic trading estate, Barry, vale of Glamorgan. The unit was formerly used as a Carpentry store/workshop and is suitable for various trades. At approx. 8879 Sq.ft. over 2 floors there is ample work space and offices. We are advised that the unit is Freehold with no ground rents or service charges.

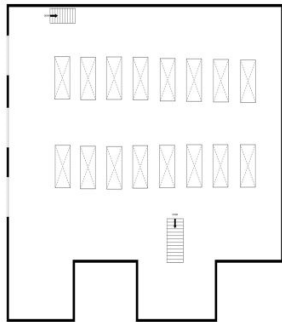
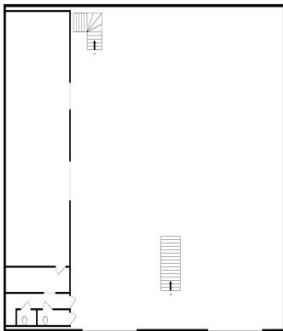
Call us on 029 20456444 to enquire and book a viewing.

Accommodation...



GROUND FLOOR
4758 sq ft. (442.1 sq.m.) approx.

1ST FLOOR
4121 sq ft. (382.9 sq.m.) approx.



TOTAL FLOOR AREA: 8879 sq ft. (824.9 sq.m.) approx.

While every effort has been made to ensure the accuracy of the floor plan, measurements of doors, windows, rooms and any other items are approximate and no responsibility is taken for any error, omission or misstatement. This plan is for illustrative purposes only and should be used as such for the prospective purchaser. The services, systems and appliances shown have not been tested and no guarantee as to their operability or efficiency can be given.

Floorplan

Energy Rating

Energy Efficiency Rating		
	Current	Potential
Very energy efficient - lower running costs		
(92-100) A		
(81-91) B		
(69-80) C		
(55-68) D		
(39-54) E		
(21-38) F		
(1-20) G		
Not energy efficient - higher running costs		
England & Wales		EU Directive 2002/91/EC 