

Glyn Terrace, Blaenclydach, Tonypandy, CF40 2EG
£100,000



- Solar Panels
- No Onward Chain
- Partially Renovated - Fantastic Opportunity
- Three Double Bedrooms
- Fantastic Views
- Combi Boiler
- Generous Living Space
- Modernisation Required

Description...

James Douglas is delighted to welcome this spacious three bedroom semi-detached property to the market. Set in the ever popular area of Blaenclydach, Tonypandy. Being sold with no onward chain. The perfect purchase for any prospective buyer looking for a bit of a project to create a truly fabulous family home. In brief terms the accommodation comprises an entrance porch, hallway, living room, dining room, kitchen and bathroom on the ground floor. Upstairs there are three double bedrooms and an en-suite to bedroom one. Mains gas fired central heating (Baxi combi boiler) and UPVC double glazed throughout. On-street parking to the front. Steps lead up to a low maintenance front garden complemented by patio slabs. Side access. East facing rear garden space complemented by a concrete base, patio slabs and a handy storage shed. Rear access. Fantastic views to the side. EPC D potential C. Council tax band A.

****SOLAR PANELS - OWNED****

****NO ONWARD CHAIN****

****PARTIALLY RENOVATED - FANTASTIC OPPORTUNITY****

****3D WALK THROUGH TOUR AVAILABLE****

Glyn Terrace, Blaenclydach, Tonypandy is in close proximity to Tonypandy town centre which includes a wide range of shops and sporting and recreational facilities. The local primary schools are St Gabriel & Raphael R.C.P. School & Cwmclydach Primary with the local high school being Ysgol Nantgwyn. There is a useful mainline railway station at Llwynypia Station & Tonypandy Station. Easy access to the A470/M4 motorway brings other major centres including the capital city of Cardiff, Newport and Swansea within commuting distance.

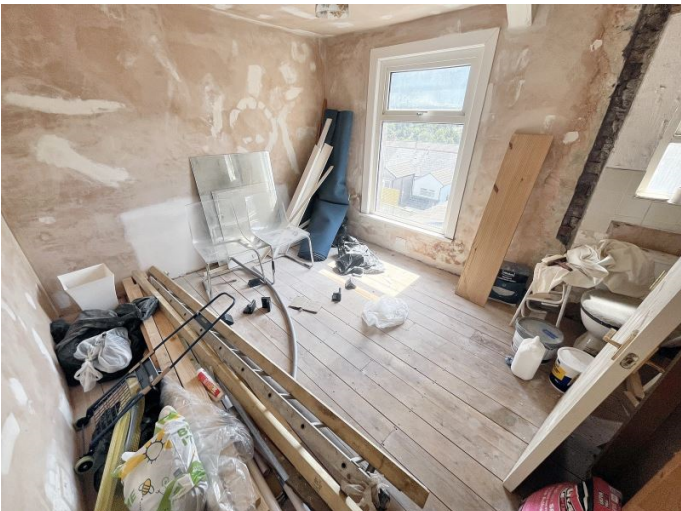
Additional Information

Tenure: Freehold
EPC: D
Council Tax Band: A

Accommodation...

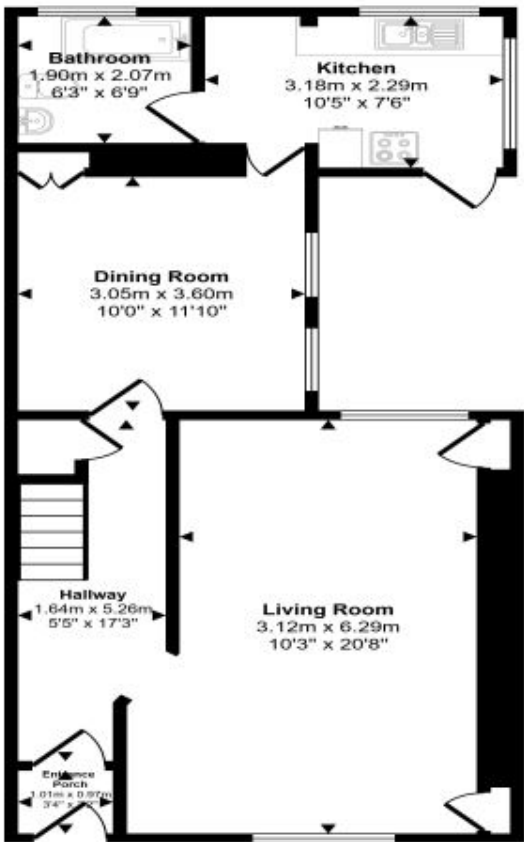
- Entrance Porch
 - Hallway
 - Living Room
 - Dining Room
 - Kitchen
 - Bathroom
 - Landing
- Bedroom One
 - En-suite
 - Bedroom Two
 - Bedroom Three
 - Outside
 - Directions



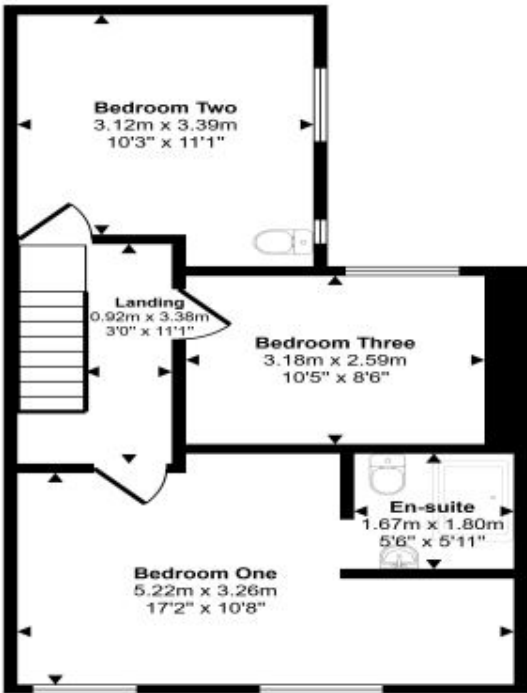


Floorplan

Approx Gross Internal Area
104 sq m / 1115 sq ft



Ground Floor
Approx 58 sq m / 624 sq ft



First Floor
Approx 46 sq m / 491 sq ft

This floorplan is only for illustrative purposes and is not to scale. Measurements of rooms, doors, windows, and any items are approximate and no responsibility is taken for any error, omission or mis-statement. Icons of items such as bathroom suites are representations only and may not look like the real items. Made with Made Snappy 360.

Energy Rating

