

Thurston Road, Trallwn, Pontypridd, CF37 4RL
£120,000



- No Onward Chain
- Close To Local Amenities
- Ideal First Time Purchase
- Investment Opportunity
- Combi Boiler
- Great A470/M4 Access
- Modernisation Required
- Potential To Create Off Road Parking
- EPC Rating D

Description...

James Douglas is delighted to welcome this two bedroom end of terrace property to the market. Set in the popular area of Trallwn, Pontypridd. The perfect first-time-buy, investment or for someone looking to put their own stamp down on a property. In brief terms the accommodation comprises an entrance hallway, living room/dining room, kitchen and shower room all on the ground floor. Upstairs there are two good sized bedrooms. Mains gas fired central heating (Ideal combi boiler) and a mixture of UPVC and aluminium double glazed windows and doors throughout. On-street parking to the front. A level rear east facing courtyard garden space with potential to create off-road parking to the side. EPC D potential B. Council tax band B.

- **RENOVATION OPPORTUNITY****
- **BEING SOLD WITH NO ONWARD CHAIN****
- **CLOSE TO TOWN CENTRE LOCATION****
- **MODERN SHOWER ROOM****

Thurston Road, Trallwn, Pontypridd is within walking distance of Pontypridd town centre and a few minutes drive from Pontypridd town centre which includes a wide range of shops and sporting and recreational facilities. The local primary schools are Coedpenmaen County Primary School & Trallwng Infants School with the local high school being Pontypridd High School. There is a useful mainline railway station in Pontypridd town centre. Easy access to the M4 motorway brings other major centres including the capital city of Cardiff, Newport and Swansea within commuting distance.

Additional Information

Tenure: Freehold
EPC: D
Council Tax Band: B

Accommodation...

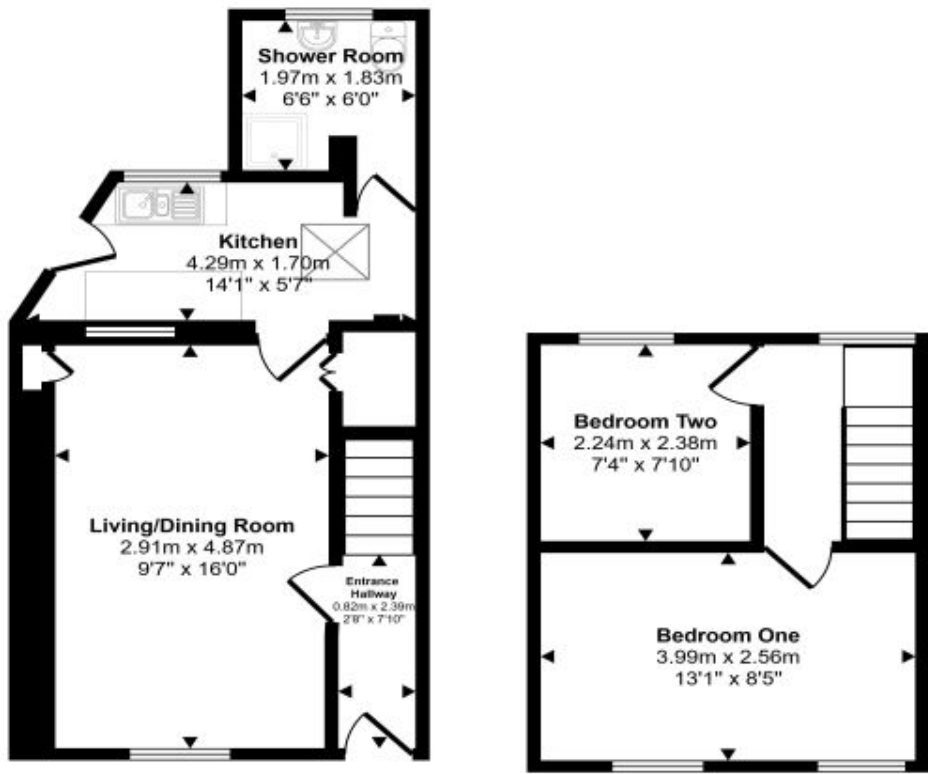
- Entrance Hallway
- Living/Dining Room
- Kitchen
- Shower Room
- Landing
- Bedroom One
- Bedroom Two
- Outside
- Directions





Floorplan

Approx Gross Internal Area
53 sq m / 571 sq ft



Ground Floor
Approx 33 sq m / 351 sq ft

First Floor
Approx 20 sq m / 220 sq ft

This floorplan is only for illustrative purposes and is not to scale. Measurements of rooms, doors, windows, and any items are approximate and no responsibility is taken for any error, omission or mis-statement. Icons of items such as bathroom suites are representations only and may not look like the real items. Made with Made Snappy 360.

Energy Rating

