

Oakland Terrace, Ferndale, , CF43 4UD
£69,950



- Two Double Bedrooms
- Close To Local Amenities
- Ideal First Time Buy
- Combi Boiler
- No Onward Chain
- Investment Opportunity
- First Floor Bathroom
- South-West Facing
- EPC Rating D

Description...

James Douglas are delighted to welcome this two double bedroom mid-terrace property to the market. Set in the popular area of Ferndale. The perfect first-time-buy, investment or for someone looking to downsize. In brief terms the accommodation comprises an entrance hallway, living room, dining room and kitchen all on the ground floor. Upstairs there are two double bedrooms and a family bathroom. Mains gas fired central heating (combi boiler) and UPVC double glazed throughout. On-street parking. A two tiered rear south-west facing garden space. EPC D potential B. Council tax band A.

****IDEAL INVESTMENT/RENOVATION OPPORTUNITY OR FIRST-TIME-BUY****

****BEING SOLD WITH NO ONWARD CHAIN****

****SOUTH-WEST FACING TWO TIER REAR GARDEN SPACE****

****CLOSE TO TOWN CENTRE****

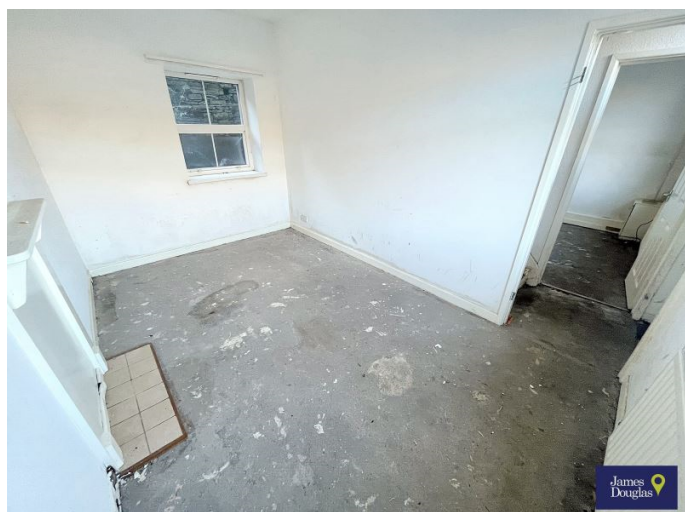
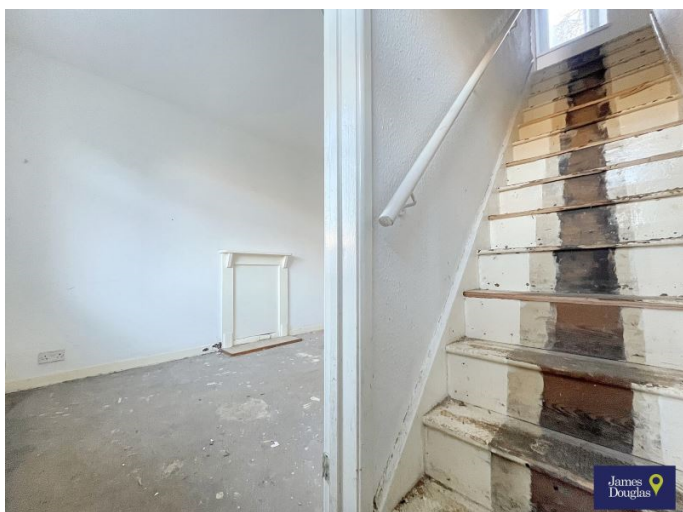
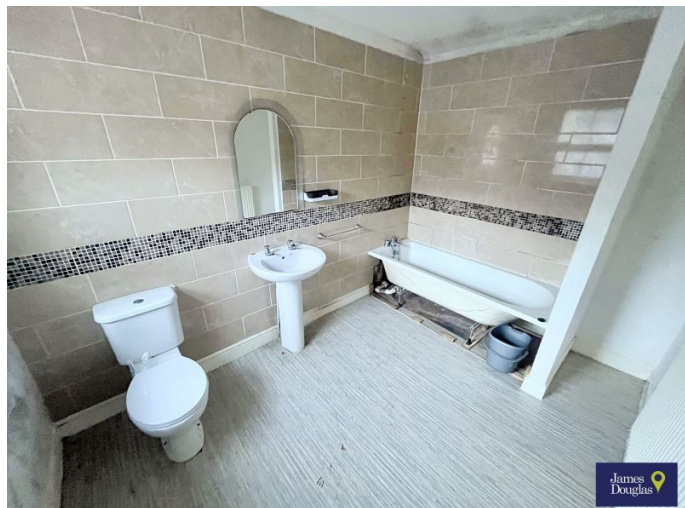
Oakland Terrace, Ferndale is within walking distance of Ferndale town centre and a few minutes drive from Tylorstown town centre which includes a wide range of shops and sporting and recreational facilities. The local primary schools are Y.G.G. Llyn-y-Forwyn Primary School & Darran Park Primary School with the local high school being Ferndale Community School. There are useful mainline railway stations in Llwynypia town centre & Ystrad town centre. Easy access to the M4 motorway brings other major centres including the capital city of Cardiff, Newport and Swansea within commuting distance.

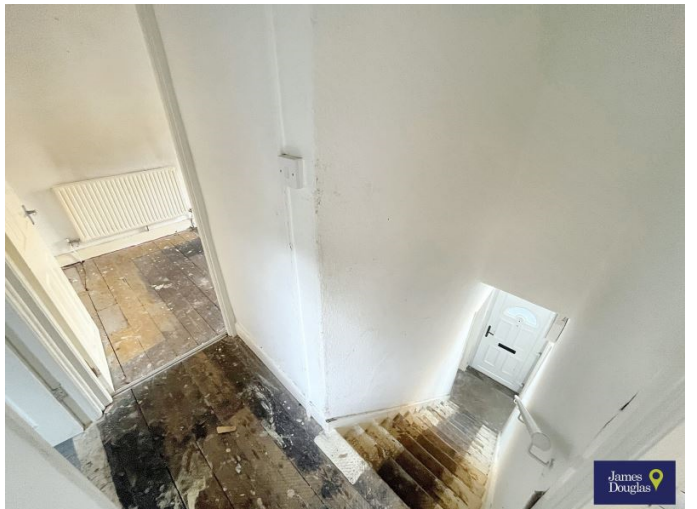
Additional Information

Tenure: Freehold
EPC: D
Council Tax Band: A

Accommodation...

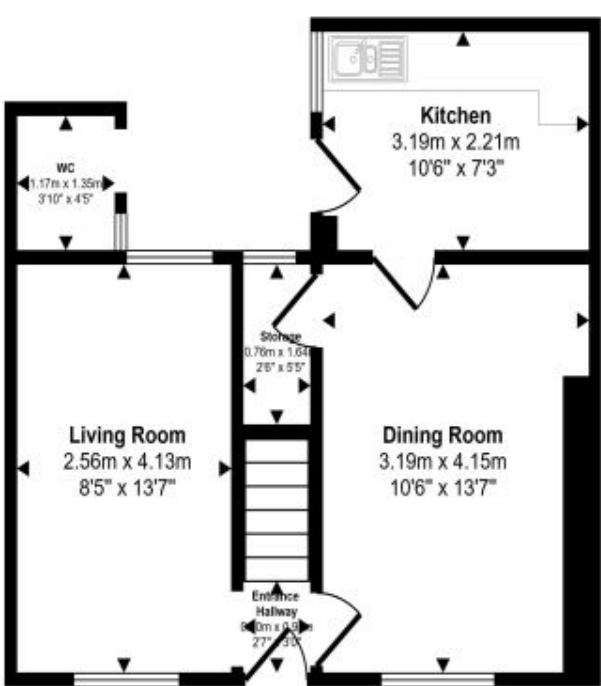
- Entrance Hallway
- Living Room
- Dining Room
- Kitchen
- Landing
- Bedroom One
- Bedroom Two
- Bathroom
- Outside
- Directions



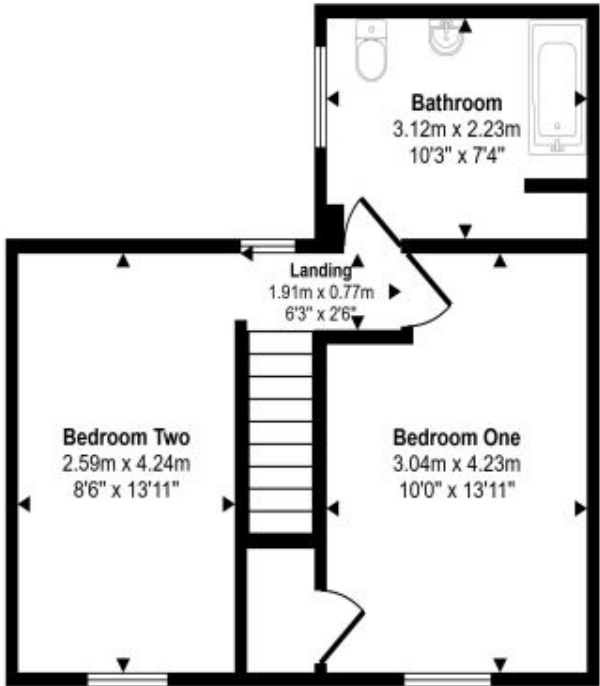


Floorplan

Approx Gross Internal Area
74 sq m / 792 sq ft



Ground Floor
Approx 37 sq m / 403 sq ft



First Floor
Approx 36 sq m / 389 sq ft

This floorplan is only for illustrative purposes and is not to scale. Measurements of rooms, doors, windows, and any items are approximate and no responsibility is taken for any error, omission or mis-statement. Icons of items such as bathroom suites are representations only and may not look like the real items. Made with Made Snappy 360.

Energy Rating

