



Augustus Street, Ynysybwl, Pontypridd, CF37 3LH

£130,000



- No Onward Chain
- Modern Fitted Kitchen
- Close To Local Amenities
- Combi Boiler
- Modern Bathroom
- Two Double Bedrooms
- Ideal First Time Buy
- Refurbished Throughout
- EPC Rating E

Description...

James Douglas is delighted to welcome this two double bedroom mid-terrace property to the market. Set in the popular area of Ynysybwl, Pontypridd. The perfect first-time-buy, buy-to-let investment or for someone looking to downsize. In brief terms the accommodation comprises an entrance porch, hallway, living/dining room and kitchen all on the ground floor. Upstairs there are two double bedrooms and a large family bathroom. Mains gas fired central heating (Main combi boiler) and UPVC double glazed windows throughout. On-street parking. North facing two tier rear garden space complimented by chippings and real grass. Rear access to storage room. EPC E potential B. Council tax band A.

****BRAND NEW KITCHEN & BATHROOM INSTALLED 2024****

****3D VIDEO TOUR AVAILABLE****

****MODERNISED AND REFURBISHED THROUGHOUT****

****POTENTIAL TO EXTEND FURTHER (STP)****

Augustus Street, Ynysybwl is within walking distance of Ynysybwl village centre and within ten minutes drive from Pontypridd town centre which includes a wide range of shops and sporting and recreational facilities. The local primary schools are Trerobart Primary School & Cefn Primary School with the local high school being Pontypridd High School. There is a useful mainline railway station in Pontypridd town centre with regular services to Cardiff. Easy access to the M4 motorway brings other major centres including the capital city of Cardiff, Newport and Swansea within commuting distance.

Additional Information

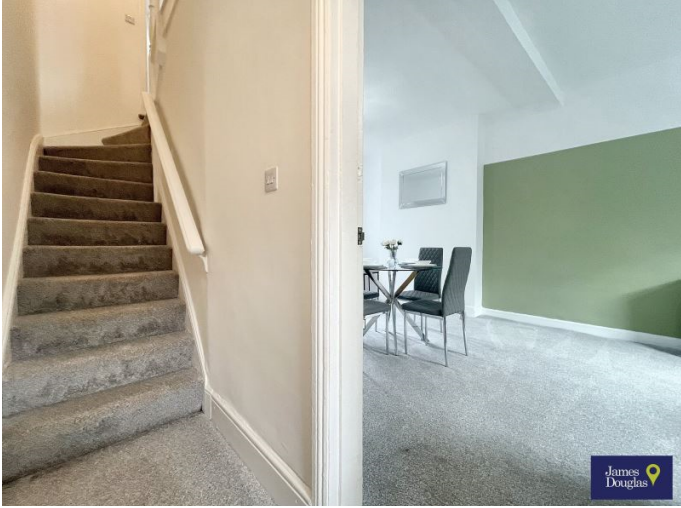
Tenure: Freehold

EPC: E

Council Tax Band: A

Accommodation...

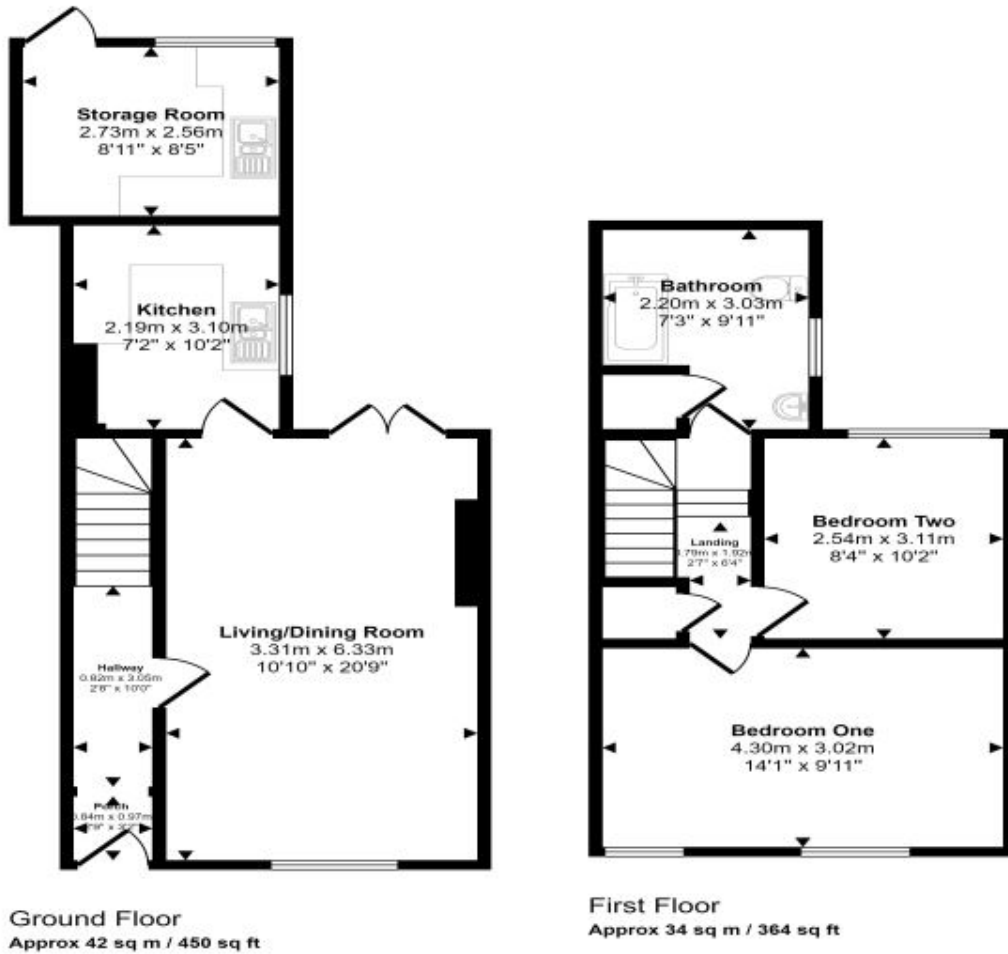
- Entrance Porch
- Hallway
- Living/Dining Room
- Kitchen
- Landing
- Bedroom One
- Bedroom Two
- Bathroom
- Storage Room
- Outside
- Directions





Floorplan

Approx Gross Internal Area
76 sq m / 813 sq ft



This floorplan is only for illustrative purposes and is not to scale. Measurements of rooms, doors, windows, and any items are approximate and no responsibility is taken for any error, omission or mis-statement. Icons of items such as bathroom suites are representations only and may not look like the real items. Made with Made Snappy 360.

Energy Rating

