



Chestnut Street, Rhydyfelin, Pontypridd, CF37 5NG

£210,000



- No Onward Chain
- Stunning Throughout
- Potential to Extend (STP)
- New Electrics & Central Heating
- Close To Local Amenities
- Combi Boiler
- New Kitchen & Bathroom
- Ideal First Time Purchase
- EPC Rating D

Description...

James Douglas is delighted to welcome this renovated three bedroom semi-detached property to the market. There is potential to extend (STP). Being sold with no onward chain. Set in the ever popular area of Rhydyfelin, Pontypridd. The perfect first-time-buy, investment or for someone looking to upsize. In brief terms the accommodation comprises an entrance hallway, living room and open-plan kitchen/diner on the ground floor. Upstairs there are three good sized bedrooms and a family bathroom. Mains gas fired central heating and UPVC double glazed throughout. On-street parking with potential to create off-road parking. A level plot with a mixture of patio slabs, concrete and chippings. Side access to north-facing rear garden space. EPC D potential C. Council tax band B.

****NO ONWARD CHAIN****

****RENOVATED THROUGHOUT****

****OPEN DAY - SATURDAY 19/10/2024 - PLEASE CALL TO REGISTER YOUR INTEREST****

****BRAND NEW ELECTRICS AND CENTRAL HEATING****

****POTENTIAL TO CREATE OFF-ROAD PARKING****

Chestnut Street, Rhydyfelin is within walking distance of the local village shops or within eight minutes drive of Pontypridd town centre which includes a wide range of shops and sporting and recreational facilities. The local primary schools are Heol-Y-Celyn Primary School & Hawthorn Primary School with the local high schools being Cardinal Newman R.C. Comprehensive School and Hawthorn High School. There are useful mainline railway stations in Treforest and Pontypridd town centre. Easy access to the M4 motorway brings other major centres including the capital city of Cardiff, Newport and Swansea within commuting distance.

Additional Information

Tenure: Freehold

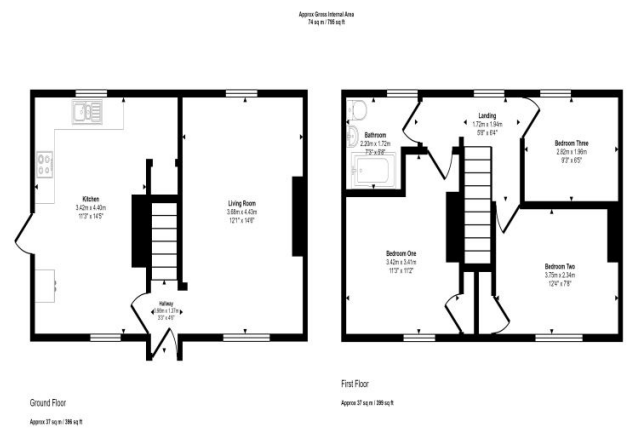
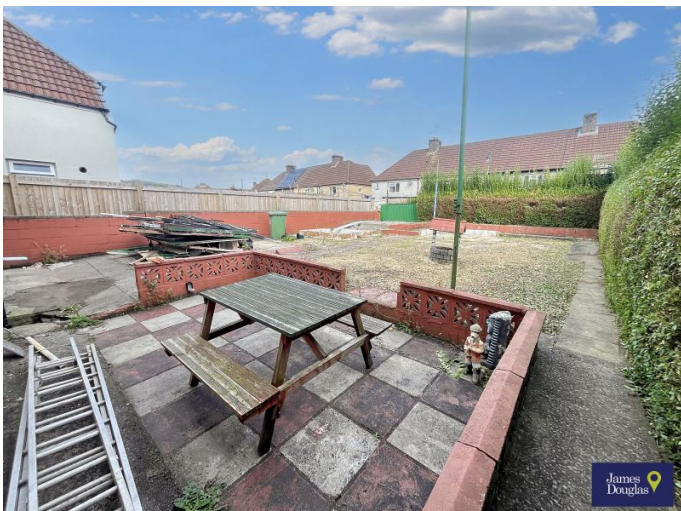
EPC: D

Council Tax Band: B

Accommodation...

- Entrance Hallway
- Living Room
- Kitchen/Diner
- Landing
- Bedroom One
- Bedroom Two
- Bedroom Three
- Bathroom
- Outside
- Directions

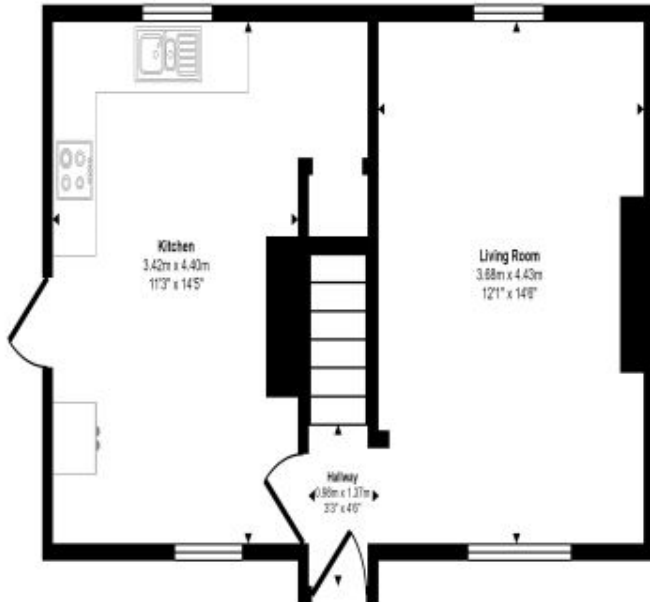




This floorplan is only for illustrative purposes and is not to scale. Measurements of rooms, doors, windows, and any items are approximate and no responsibility is taken for any error, omission or mis-statement. Icons of items such as bathroom suites are representations only and may not look like the real items. Made with Make Spacey 360.

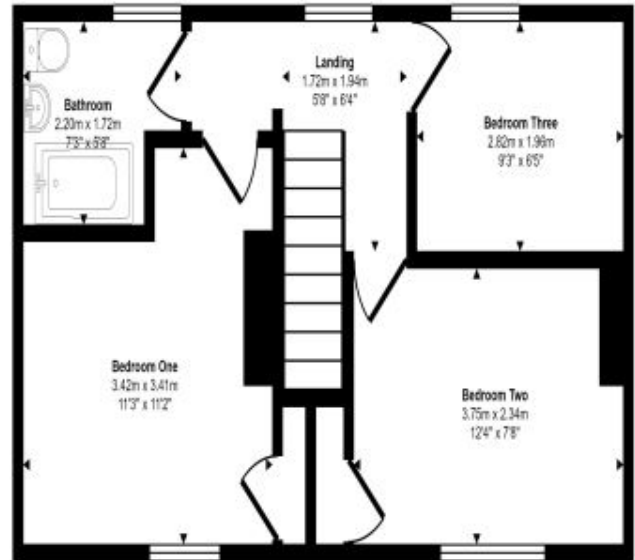
Floorplan

Approx Gross Internal Area
74 sq m / 796 sq ft



Ground Floor

Approx 37 sq m / 396 sq ft



First Floor

Approx 37 sq m / 396 sq ft

This floorplan is only for illustrative purposes and is not to scale. Measurements of rooms, doors, windows, and any items are approximate and no responsibility is taken for any error, omission or mis-statement. Icons of items such as bathroom suites are representations only and may not look like the real items. Made with Made Snappy 360.

Energy Rating

