



Kennilworth House, City Centre, Cardiff, CF10 1DJ

£200,000



- **Balcony**
- **On Site Concierge**
- **Superb Views of City Centre**
- **Characterful Property**
- **Close To Local Amenities**
- **Ideal First Time Purchase**
- **Two / Three Bedrooms**
- **EPC Rating TBC**

Description...

Discover urban living at its finest in this expansive 2/3 bedroom apartment, perfectly nestled in the vibrant centre of Cardiff. With a plethora of period features blending seamlessly with contemporary possibilities, this remarkable property is an ideal canvas for your dream home.

Step inside and be greeted by a flood of natural light that elegantly showcases the generous layout of this apartment. The high ceilings and spacious rooms create an atmosphere of grandeur and comfort, while retaining many original features, including ornate cornicing, parquet flooring, and decorative fireplaces that offer a unique character that simply cannot be replicated.

With the option to use the third room as a study, nursery, or guest room, this versatile layout can easily adapt to your lifestyle needs. Enjoy stunning views of the iconic Cardiff Stadium and Cardiff Blues grounds from the comfort of your own home, providing a constant reminder of the city's vibrant culture and sporting heritage.

Situated in the bustling heart of Cardiff, you're just moments away from an array of boutiques, cafes, restaurants, and cultural attractions, making this the perfect place for city living. While already spacious and inviting, the apartment offers an exciting opportunity for the new owner to put their personal touch on the interiors and modernise it to their taste.

Call us now to arrange your viewing!

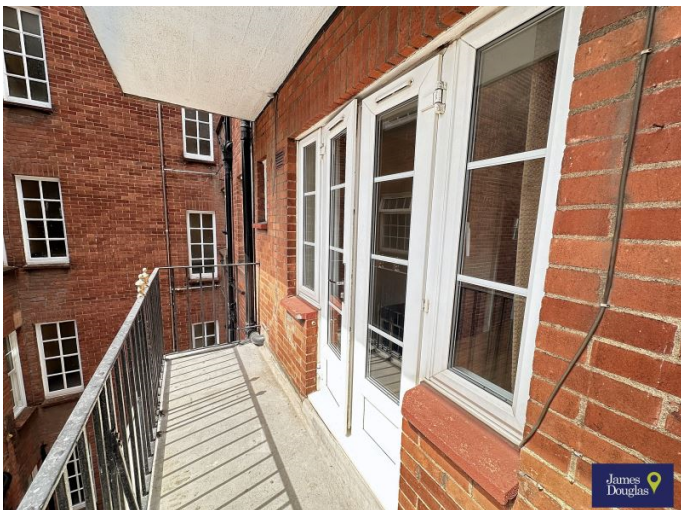
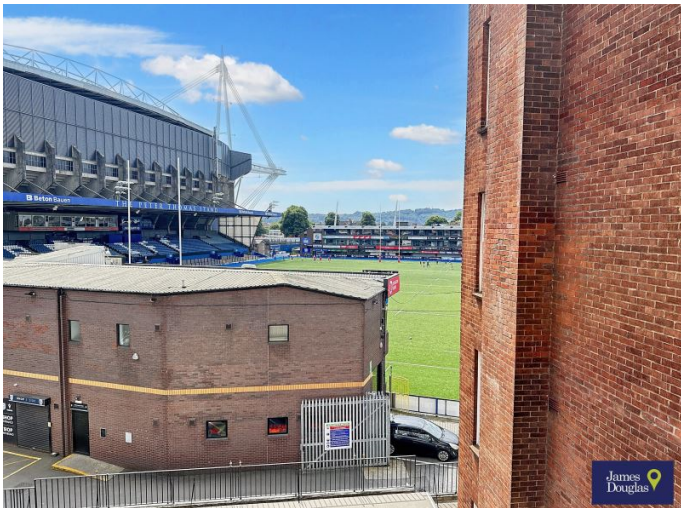
EPC - D

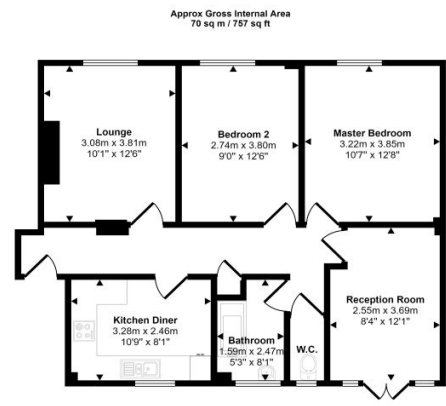
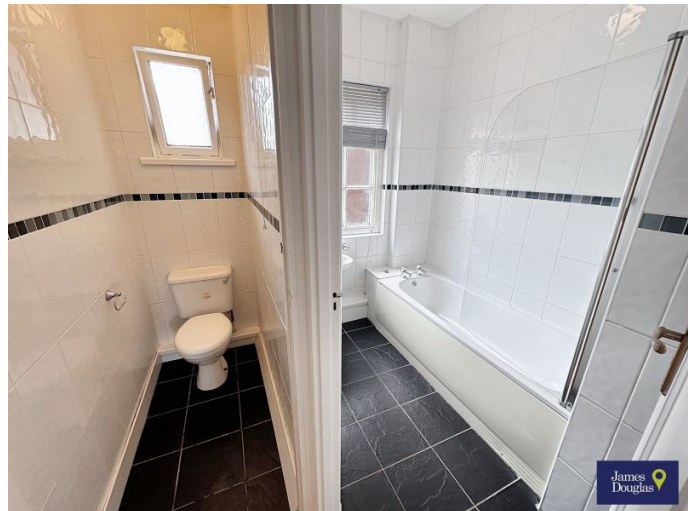
Council tax band - E

GR = £100 P/A

SC = £5,610 P/A

Accommodation...





Floorplan

This floorplan is only for illustrative purposes and is not to scale. Measurements of rooms, doors, windows, and any items are approximate and no responsibility is taken for any error, omission or mis-statement. Icons of items such as bathroom suites are representations only and may not look like the real items. Made with Made Snappy 360.

Floorplan

Approx Gross Internal Area
70 sq m / 757 sq ft



Floorplan

This floorplan is only for illustrative purposes and is not to scale. Measurements of rooms, doors, windows, and any items are approximate and no responsibility is taken for any error, omission or mis-statement. Icons of items such as bathroom suites are representations only and may not look like the real items. Made with Made Snappy 360.

Energy Rating

Energy Efficiency Rating		Current	Potential
<i>Very energy efficient - lower running costs</i>			
92- A			
(81-91) B			
(69-80) C			
(55-68) D			
(39-54) E			
(21-38) F			
(1-20) G			
<i>Not energy efficient - higher running costs</i>			
England & Wales	EU Directive 2002/91/EC		