



Meadow Street, Treforest, Pontypridd, CF37 1SS

£155,000



- Close To Local Amenities
- Walking Distance to University of South Wales
- Excellent Location
- HMO Licensed
- Combi Boiler
- West-facing Garden
- No Onward Chain
- Generous Living Space

Description...

James Douglas are delighted to welcome this five bedroom mid-terrace HMO property to the market. Set in the popular area of Treforest, Pontypridd. The perfect investment property for any prospective HMO landlord. This property is in close proximity to the University of South Wales. In brief terms the accommodation comprises an entrance hallway, bedroom one, living room, kitchen, lobby and bathroom all on the ground floor. Upstairs there are four bedrooms and a shower room. Mains gas fired central heating and double glazed throughout. On-street permit parking. Low maintenance, west-facing rear patio garden space with rear access. Potential to create off-road parking. EPC D potential C. Council tax band C.

****HMO LICENCED**SOLD WITH VACANT POSSESSION****

****NO ONWARD CHAIN****

Meadow Street, Treforest is within walking distance of Treforest town centre and a few minutes drive from Pontypridd town centre which includes a wide range of shops and sporting and recreational facilities. The local primary schools are Parclewis Primary School & St Michael's R.C. Primary School with the local high school being Cardinal Newman R.C. Comprehensive School. Most importantly for any prospective landlord is that Meadow Street is within walking distance of the University of South Wales. There are useful mainline railway stations in Treforest and Pontypridd town centre. Easy access to the M4 motorway brings other major centres including the capital city of Cardiff, Newport and Swansea within commuting distance.

Additional Information

Tenure: Freehold

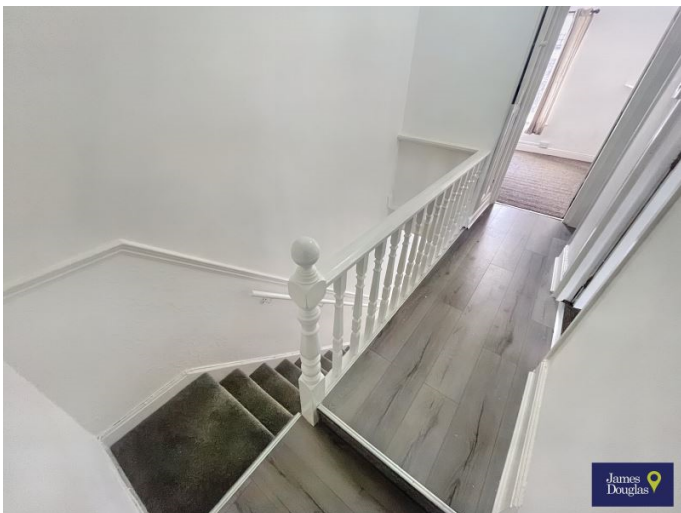
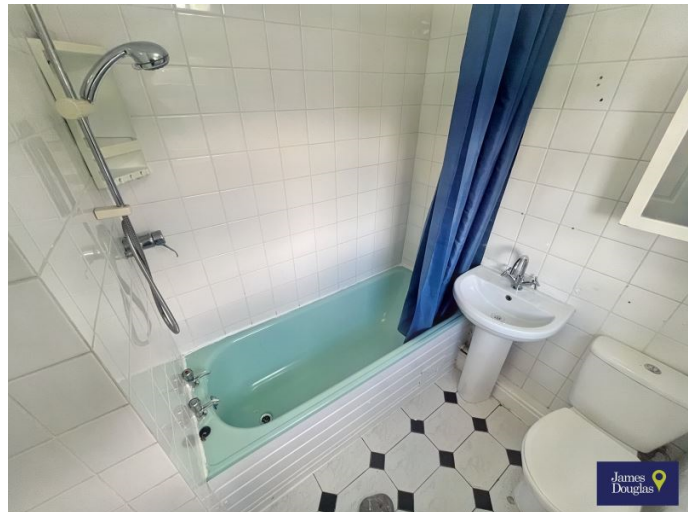
EPC: D

Council Tax Band: C

Accommodation...

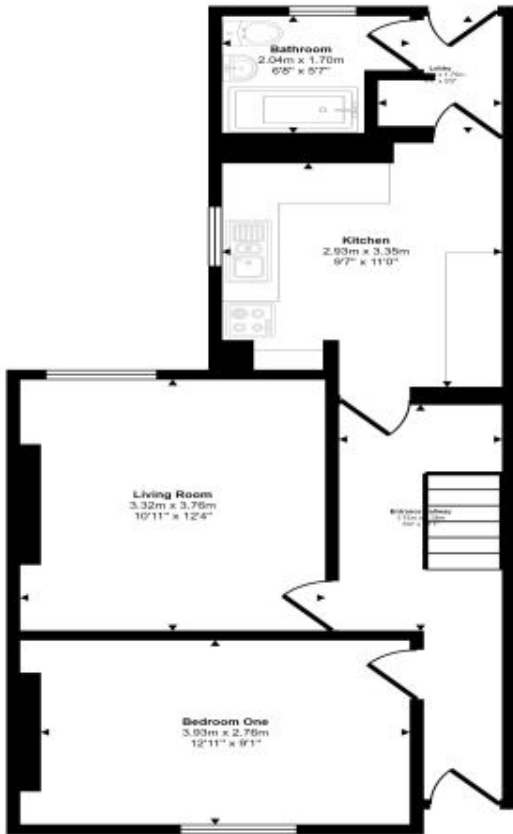
- Entrance Hallway
- Bedroom One
- Living Room
- Kitchen
- Lobby
- Bathroom
- Landing
- Bedroom Two
- Bedroom Three
- Bedroom Four
- Bedroom Five
- Shower Room
- Outside
- Directions



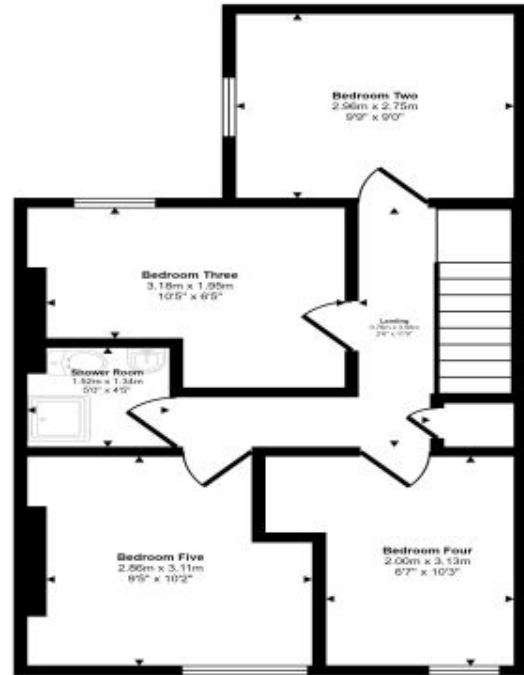


Floorplan

Approx Gross Internal Area
94 sq m / 1017 sq ft



Ground Floor
Approx 51 sq m / 544 sq ft



First Floor
Approx 44 sq m / 473 sq ft

This floorplan is only for illustrative purposes and is not to scale. Measurements of rooms, doors, windows, and any items are approximate and no responsibility is taken for any error, omission or mis-statement. Icons of items such as bathroom suites are representations only and may not look like the real items. Made with Made Snappy 360.

Energy Rating

