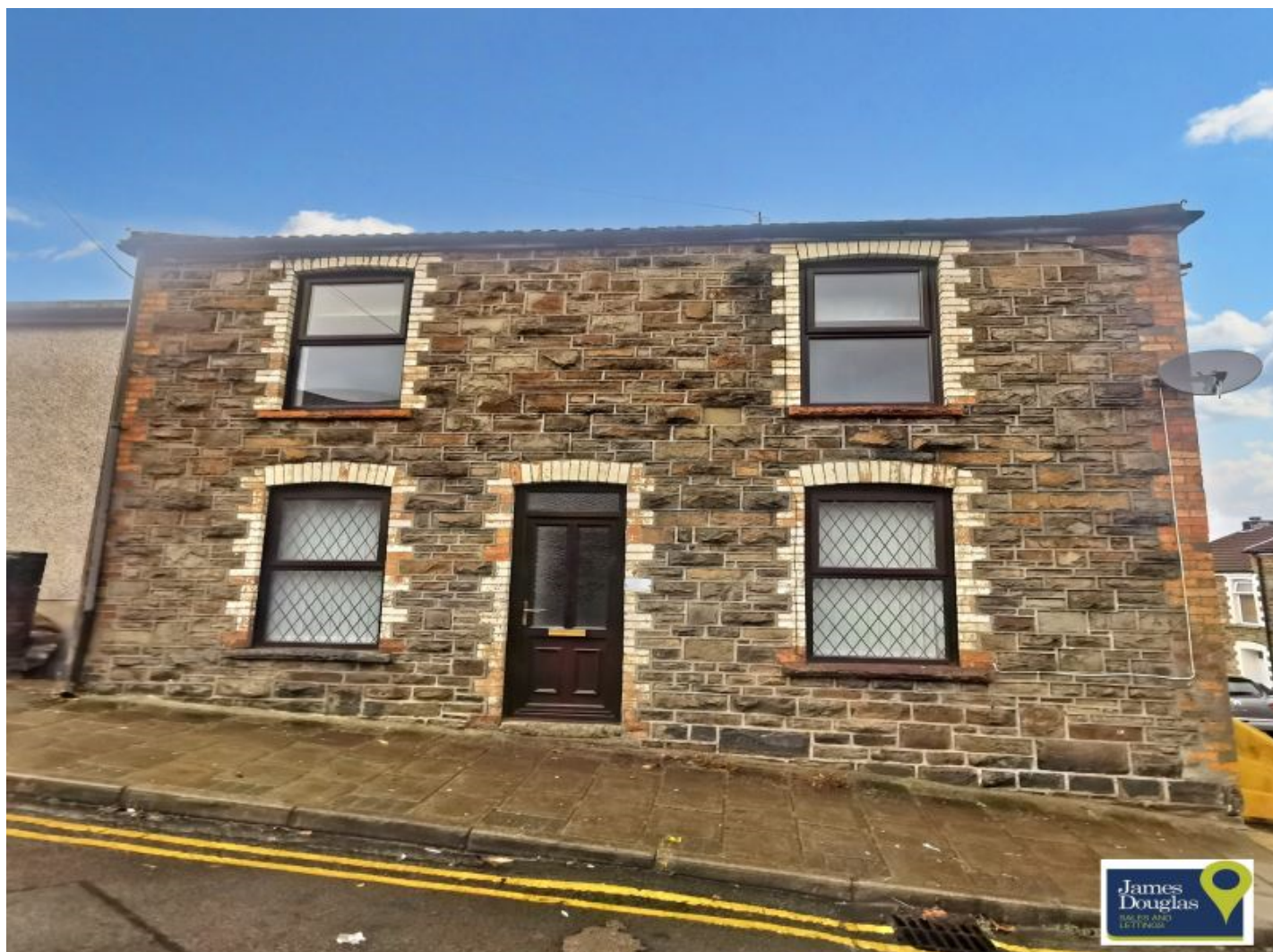




Albert Road, Graig, Pontypridd, CF37 1LA

£150,000



- Two Bathrooms
- End Terrace
- Two Reception Rooms
- Modernisation Required
- Four Bedrooms
- No Onward Chain
- EPC Rating F

Description...

£150,000 - £155,000.

This four bedroom terraced home situated in the heart of Graig, Pontypridd, presents an excellent opportunity for those looking for a spacious property that they can stamp their own mark on. With a spacious layout, briefly comprising two reception rooms, kitchen and bathroom on the ground floor and four well proportioned bedrooms and separate shower room on the first floor, this period property offers a blank canvas for transformation, allowing you to tailor it to your specific tastes and lifestyle. Best of all, this has the added bonus of being offered to market with no onward chain.

Additional Information

=====

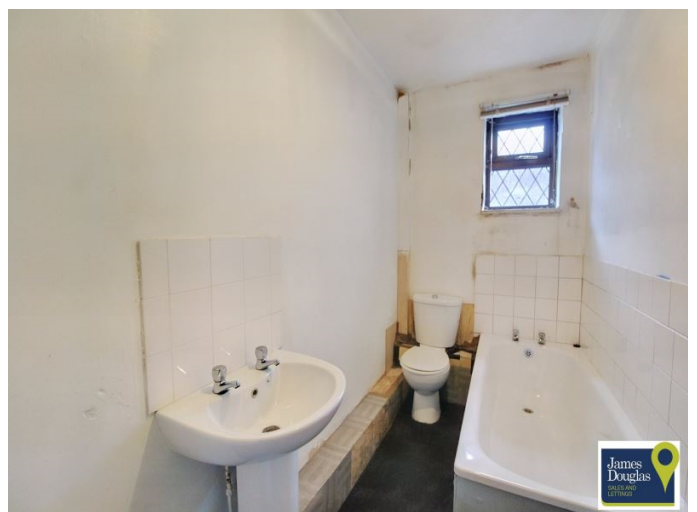
Tenure: Freehold

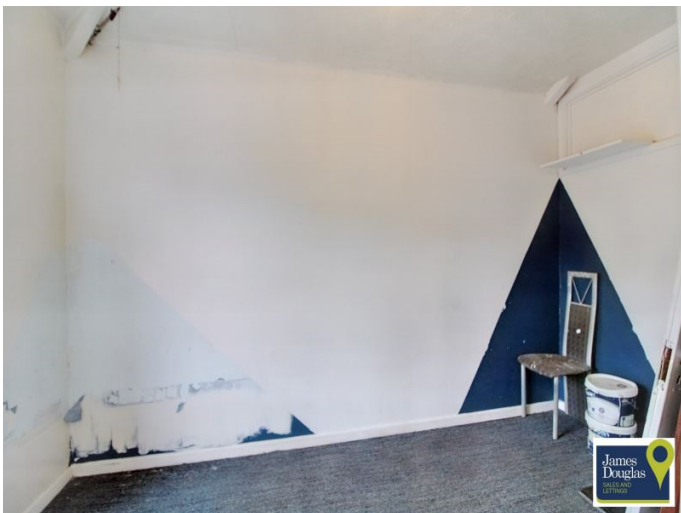
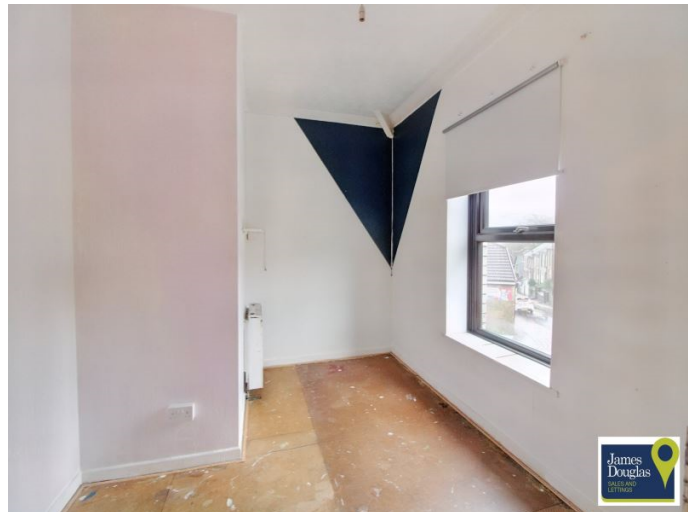
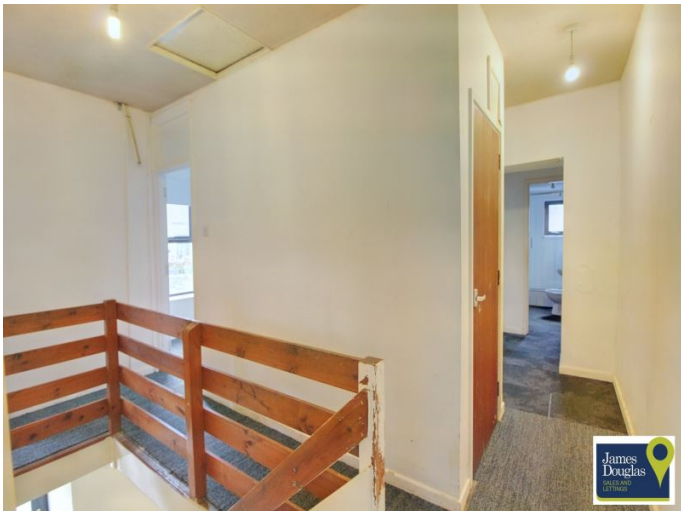
EPC Rating: F

Council Tax Band: B

Accommodation...

- Front of Property
- Entrance
- Reception Room 1
- Reception Room 2
- Kitchen
- Ground Floor Bathroom
- First Floor Landing
- Bedroom One
- Bedroom Two
- Bedroom Three
- Bedroom Four
- Shower Room
- Courtyard Garden





Floorplan

Energy Rating

