

Kingsland Terrace, Treforest, Pontypridd, CF37 1RX
£140,000



- Investment Opportunity
- Sold with tenant in situ
- Mid Terrace
- Walking Distance to University of South Wales
- Three Bedrooms
- Well Presented Throughout
- EPC Rating D

Description...

Guide Price £140,000 - £145,000 - An excellent opportunity to acquire a well presented three bedroom mid terrace home conveniently positioned to offer excellent access to both Glyntaff and Treforest Campuses. Boasting a generously-sized lounge and dining area, the property features a well-appointed kitchen equipped with essential appliances. A modern shower room is also available on the ground floor.

The classic combination of two double bedrooms and one single bedroom are accessible off the first floor landing. A low maintenance garden can be found to the rear. This investment opportunity is in an ideal choice for catering to students. No chain.

Additional Information

Tenure: Freehold

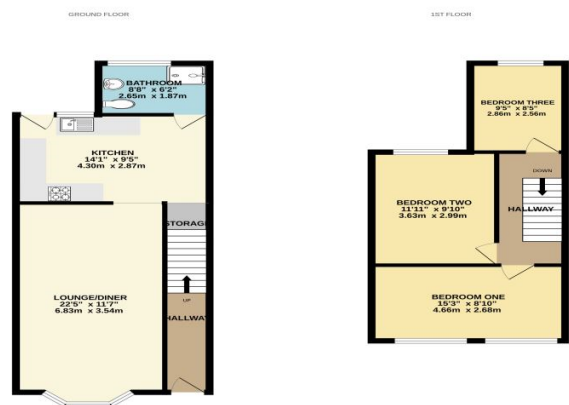
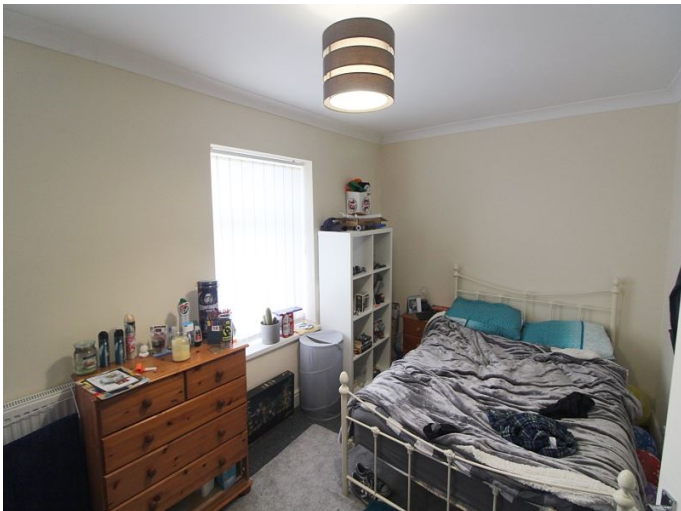
EPC Rating: C

Council Tax: D

Accommodation...

- Front of Property
- Entrance Hallway
- Lounge / Diner
- Kitchen
- Ground Floor Shower Room
- First Floor Landing
- Bedroom One
- Bedroom Two
- Bedroom Three
- Garden

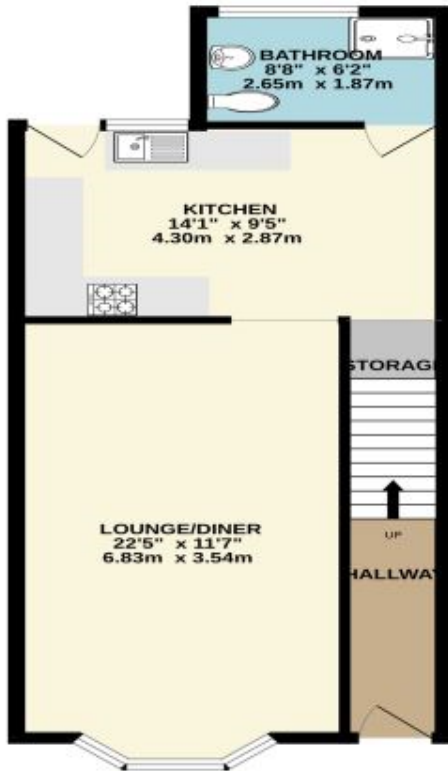




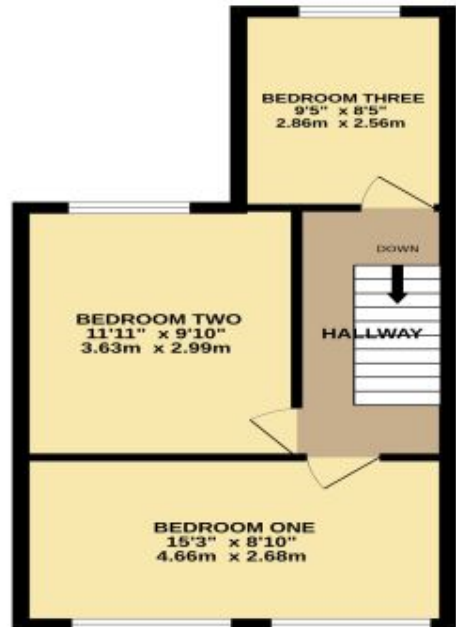
THREE BEDROOM MID TERRACE HOUSE
 TOTAL FLOOR AREA: 97.6 sq. m (1047 sq. ft.)
 *While every effort has been made to ensure the accuracy of the floor plan, the purchaser should verify the actual measurements of the property before completion of the purchase. The floor plan is provided for information only and does not constitute an offer of any financial product or service.

Floorplan

GROUND FLOOR



1ST FLOOR



THREE BEDROOM MID TERRACE HOME

TOTAL FLOOR AREA : 876 sq.ft. (81.4 sq.m.) approx.

Whilst every attempt has been made to ensure the accuracy of the floorplan contained here, measurements of doors, windows, rooms and any other items are approximate and no responsibility is taken for any error, omission or mis-statement. This plan is for illustrative purposes only and should be used on such by any prospective purchaser. The services, systems and appliances shown have not been tested and no guarantee as to their operability or efficiency can be given.
Made with Metropix ©2023

Energy Rating

