



Woodland Terrace, Maesycoed, Pontypridd, CF37 1EA

£130,000



- Walking Distance to Town Centre
- Low Maintenance Rear Garden
- No Onward Chain
- Two Reception Rooms
- Modernisation Required
- Combi Boiler
- Close To Local Amenities
- West-facing Garden

Description...

James Douglas are delighted to welcome this four bedroom end-terrace property onto the market. Set in the popular area of Maesycod, Pontypridd. The perfect first-time-buy, investment or for someone looking to upsize. In brief terms the accommodation comprises of an entrance porch, hallway, living room, dining room, kitchen, lean-to and bathroom all on the ground floor. Upstairs there are two double bedrooms and two single bedrooms. Mains gas fired central heating and double glazed pretty much throughout. On-street parking to front. The garden is set over one tier with low maintenance patio space. EPC E potential B. Council tax band C.

****NO ONWARD CHAIN****

****SOUGHT AFTER LOCATION****

****CLOSE TO TOWN CENTRE****

Woodland Terrace, Maesycod is within walking distance of Pontypridd town centre and a few minutes drive of Pontypridd town centre which includes a wide range of shops and sporting and recreational facilities. Woodland Terrace is within walking distance to the local convenience store and bus stop. The local primary schools are Maes-Y-Coed Primary School & Ysgol G.G. Evan James Primary School with the local high school being Pontypridd High School. There is a useful mainline railway station in Pontypridd town centre. Easy access to the M4 motorway brings other major centres including the capital city of Cardiff, Newport and Swansea within commuting distance.

Additional Information

Tenure: Freehold

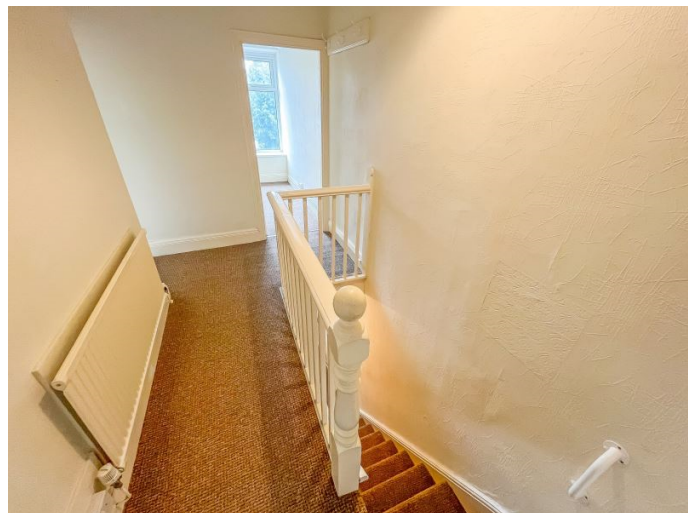
EPC: E

Council Tax Band: C

Accommodation...

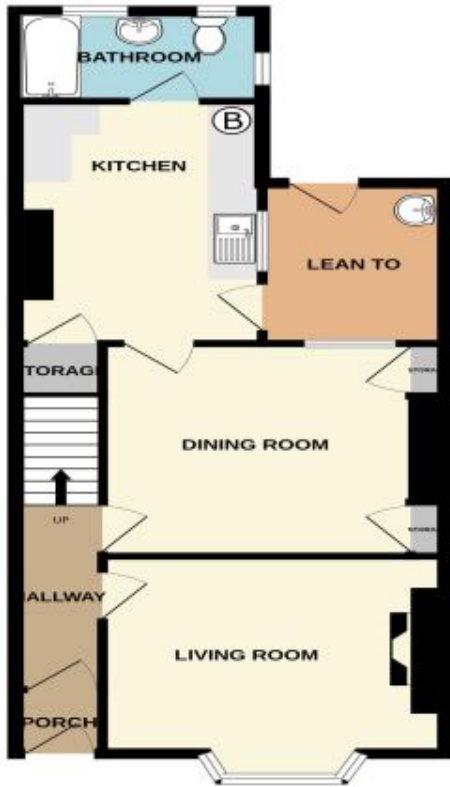
- Entrance Porch
- Hallway
- Living Room
- Dining Room
- Kitchen
- Lean-To
- Bathroom
- Landing
- Bedroom One
- Bedroom Two
- Bedroom Three
- Bedroom Four
- Outside
- Directions





Floorplan

GROUND FLOOR
553 sq.ft. (51.4 sq.m.) approx.



1ST FLOOR
433 sq.ft. (40.2 sq.m.) approx.



FOUR BEDROOM END OF TERRACE

TOTAL FLOOR AREA : 986 sq.ft. (91.6 sq.m.) approx.

Whilst every attempt has been made to ensure the accuracy of the floorplan contained here, measurements of doors, windows, stairs and any other items are approximate and no responsibility is taken for any error, omission or mis-statement. This plan is for illustrative purposes only and should be used on such by any prospective purchaser. The services, systems and appliances shown have not been tested and no guarantee as to their operability or efficiency can be given.
Made with Homestyler ©2023



Energy Rating

